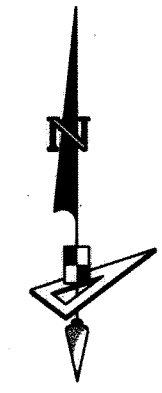


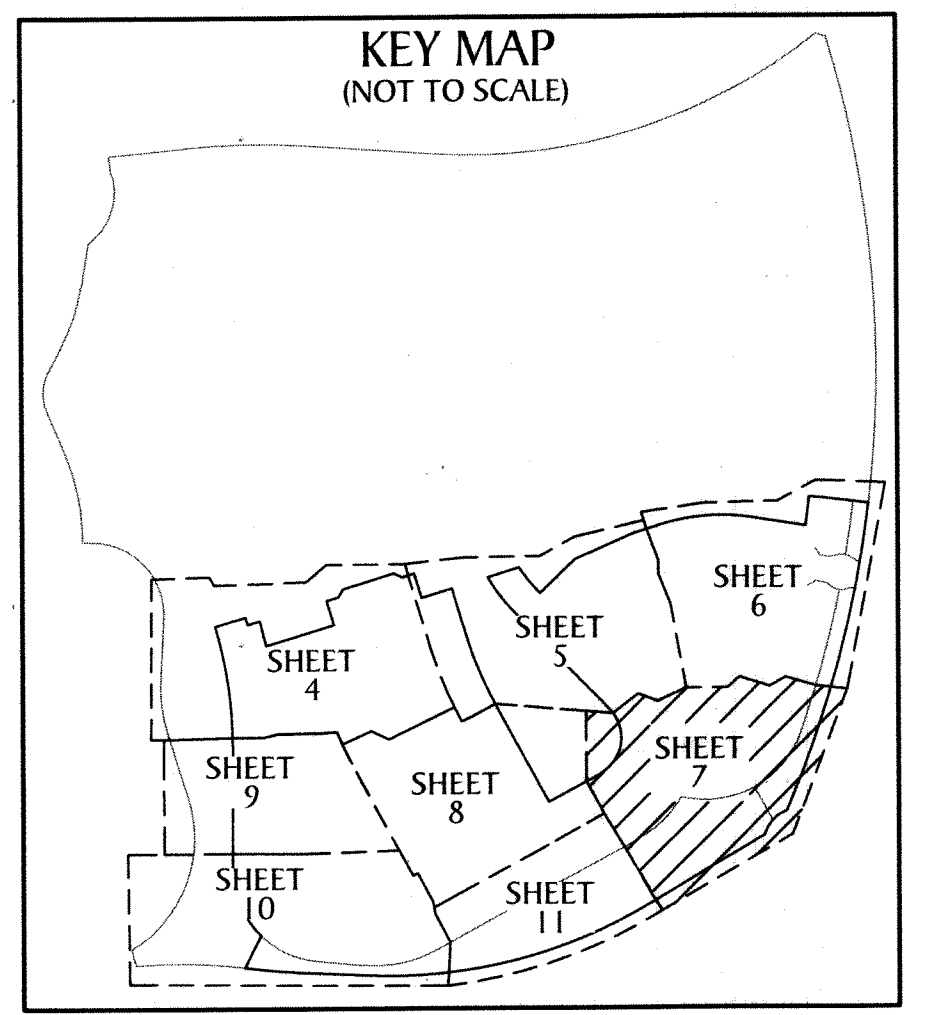
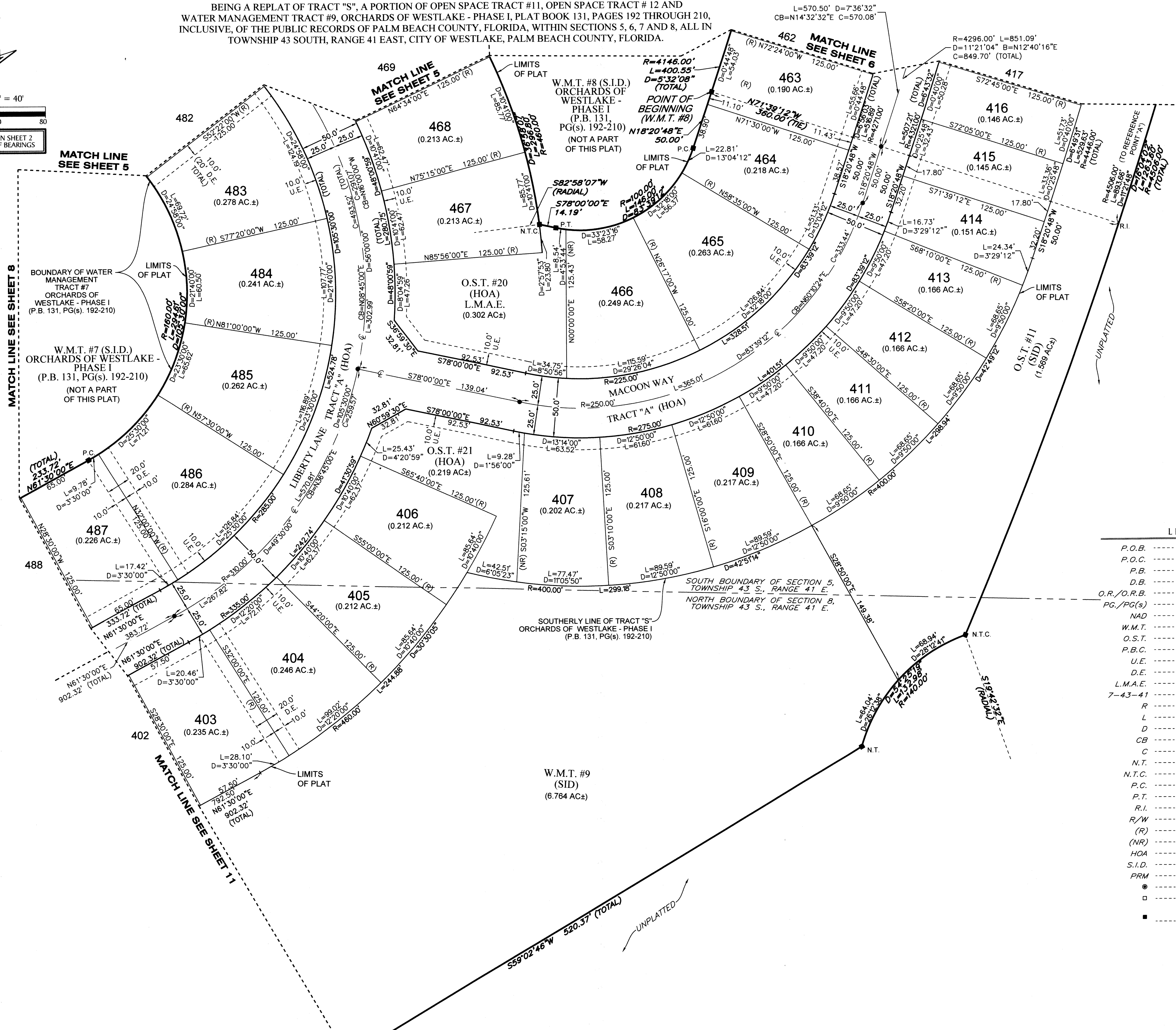
ORCHARDS OF WESTLAKE - PHASE II

BEING A REPLAT OF TRACT "S", A PORTION OF OPEN SPACE TRACT #11, OPEN SPACE TRACT #12 AND WATER MANAGEMENT TRACT #9, ORCHARDS OF WESTLAKE - PHASE I, PLAT BOOK 131, PAGES 192 THROUGH 210, INCLUSIVE, OF THE PUBLIC RECORDS OF PALM BEACH COUNTY, FLORIDA, WITHIN SECTIONS 5, 6, 7 AND 8, ALL IN TOWNSHIP 43 SOUTH, RANGE 41 EAST, CITY OF WESTLAKE, PALM BEACH COUNTY, FLORIDA.

94



SCALE 1" = 40'
0 20 40 80
SEE NOTE ON SHEET 2 FOR BASIS OF BEARINGS



LEGEND

- P.O.B. ----- POINT OF BEGINNING
- P.O.C. ----- POINT OF COMMENCEMENT
- P.B. ----- PLAT BOOK
- D.B. ----- DEED BOOK
- O.R./O.R.B. ----- OFFICIAL RECORDS BOOK
- PG./PG(S) ----- PAGE(S)
- NAD ----- NORTH AMERICAN DATUM
- W.M.T. ----- WATER MANAGEMENT TRACT
- O.S.T. ----- OPEN SPACE TRACT
- P.B.C. ----- PALM BEACH COUNTY
- U.E. ----- UTILITY EASEMENT
- D.E. ----- DRAINAGE EASEMENT
- L.M.A.E. ----- LAKE MAINTENANCE ACCESS EASEMENT
- 7-43-41 ----- SECTION-TOWNSHIP-RANGE
- R ----- RADIUS
- L ----- ARC LENGTH
- D ----- DELTA ANGLE
- CB ----- CHORD BEARING
- C ----- CHORD
- N.T. ----- NON-TANGENT
- N.T.C. ----- NON-TANGENT CURVATURE
- P.C. ----- POINT OF CURVATURE
- P.T. ----- POINT OF TANGENCY
- R.I. ----- RADIAL INTERSECTION
- R/W ----- RIGHT-OF-WAY
- (R) ----- RADIAL
- (NR) ----- NON-RADIAL
- HOA ----- HOMEOWNERS ASSOCIATION
- S.I.D. ----- SEMINOLE IMPROVEMENT DISTRICT
- PRM ----- PERMANENT REFERENCE MONUMENT
- ----- PERMANENT CONTROL POINT
- ----- FOUND PERMANENT REFERENCE MONUMENT
- ----- SET 4"x4" CONCRETE MONUMENT WITH 2" ALUMINUM DISK STAMPED "PRM LB 7768"